

16 ACRES,
4 MAZES

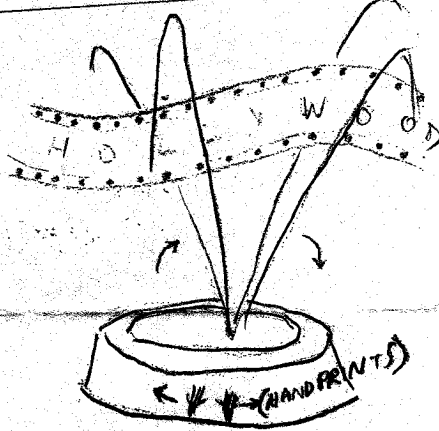
1-2 ACRES (NOT)
PER MAZE.



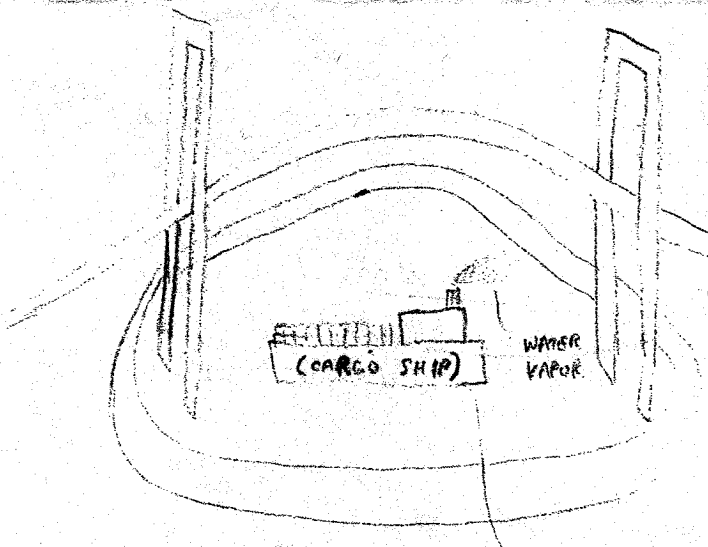
(SHALLOW SPLASH POOL FOR KIDS SURROUNDED BY PALM TREES OF ALL SHAPES AND SIZES)

SYMBOLS : PLAY / RECREATION
NATURE / "EARTH"
YOUTH
DIVERSITY

"ELEMENTS OF LOS ANGELES PARK"
© 2005, STEVEN CONTRERAS (714) 501-8277

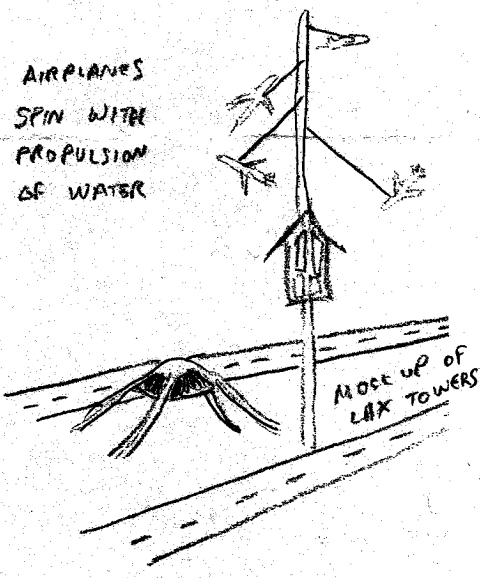


DREAMS / "FIRE"
GLITZ
STARS
1ST AMENDMENT RICH



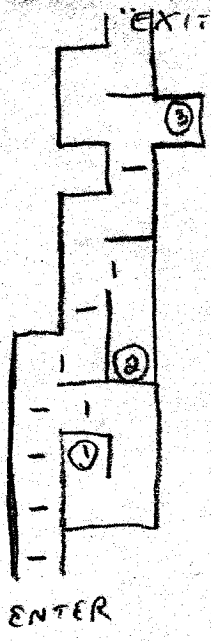
"WATER"
TRANSPORTATION
COMMERCE

"STEAM ORGAN"
PLAYS "MINUETS"
AND TOOTS AN
THE HOUR

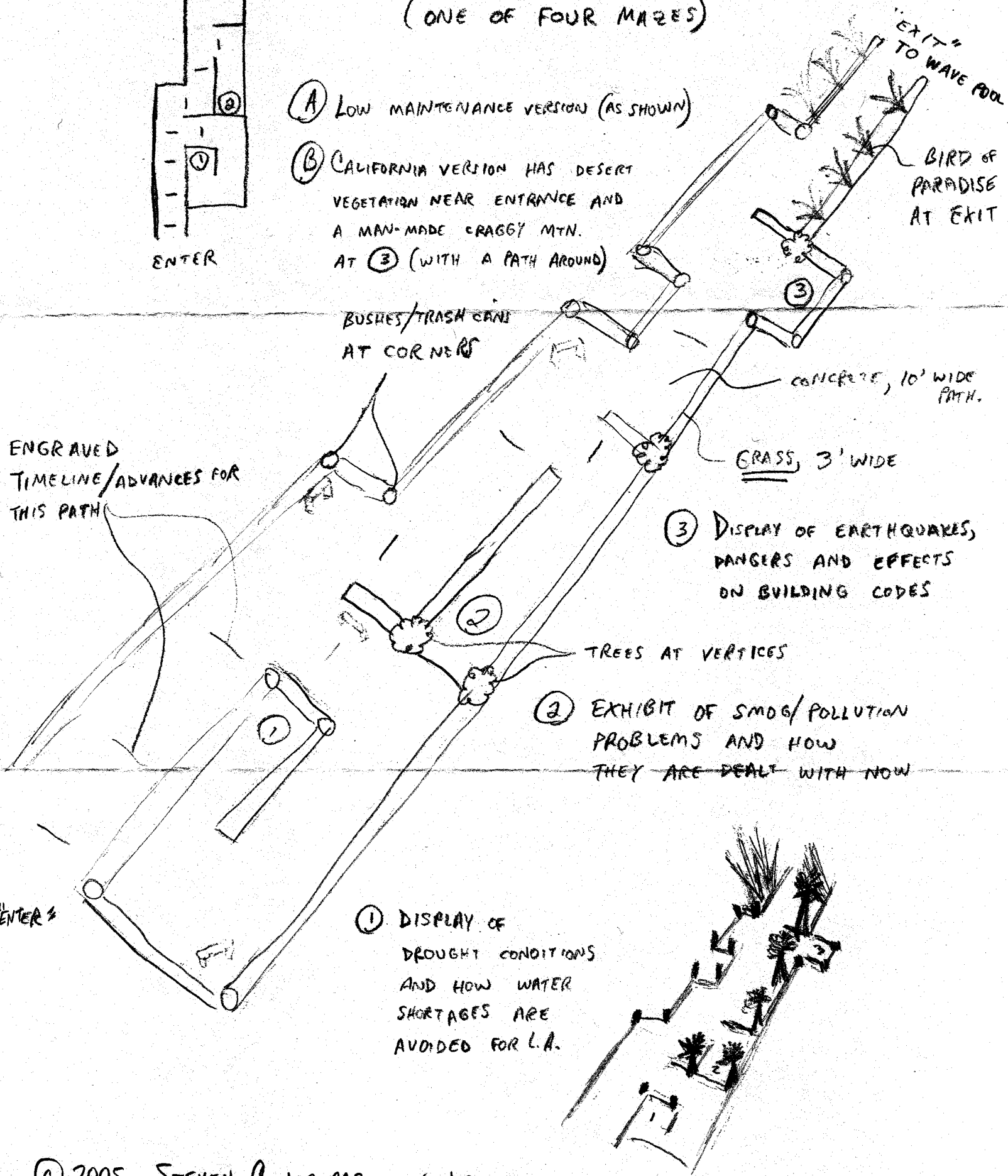


SAMPLE LAYOUT FOR "EARTH" MAZE

(ONE OF FOUR MAZES)



- (A) LOW MAINTENANCE VERSION (AS SHOWN)
- (B) CALIFORNIA VERSION HAS DESERT VEGETATION NEAR ENTRANCE AND A MAN-MADE CRAGGY MTN. AT (3) (WITH A PATH AROUND)



(1) DISPLAY OF DROUGHT CONDITIONS AND HOW WATER SHORTAGES ARE AVOIDED FOR L.A.

(2) EXHIBIT OF SMOG/POLLUTION PROBLEMS AND HOW THEY ARE DEALT WITH NOW

(3) DISPLAY OF EARTHQUAKES, DANGERS AND EFFECTS ON BUILDING CODES

ENGRAVED TIMELINE/ADVANCES FOR THIS PATH

BUSHES/TRASH CANS AT CORNERS

CONCRETE, 10' WIDE PATH.

GRASS, 3' WIDE

TREES AT VERTICES

BIRD OF PARADISE AT EXIT

"EXIT" TO WAVE POOL

ENTER

ENTER